



AEROFLEX®

Insulated Pipe Supports



Aerofix® Insulated Pipe Supports





Aerofix[®]

Insulated Pipe Supports

HVAC | Refrigeration | VRF | Chilled Water
Hot and Cold-Water Piping

Aerofix[®] patented insulated pipe supports are high-strength, load-bearing, closed-cell insulation fittings. Will not compress or crush under loads imposed by active piping systems at pipe hanger and strut clamp locations. Composed of rigid closed-cell, lightweight, polymeric foam and lined with closed-cell EPDM rubber. Aerofix is encased in a zero-perm, weather-proof, corrosion-proof EPDM polymer membrane with a high-performance pressure-sensitive closure system.

Hermetically seals piping against vapor drive. Prevents thermal bridging and the potential for corrosion under insulation (CUI) when installed with AEROFLEX EPDM[™] closed-cell elastomeric pipe insulation, adhesives and zero-perm Protape[®].

Wide range of ID's (1/4" - 12" IPS) and thicknesses (1/2" - 2"). See back cover.

Superior performance

Zero-perm

Hermetic system prevents thermal bridging and corrosion under insulation (CUI)

Non-compressible structure maintains thermal efficiency

Wide service temperature range: -328°F to 257°F (-200°C to 125°C)

Non-corrosive on stainless steel piping

Safe for indoor environments

Suitable for interior and exterior applications

Self-extinguishing (ASTM D 635)

No CFC's, HFC's, HCFC's, PBDE's, nitrosamine or fibers

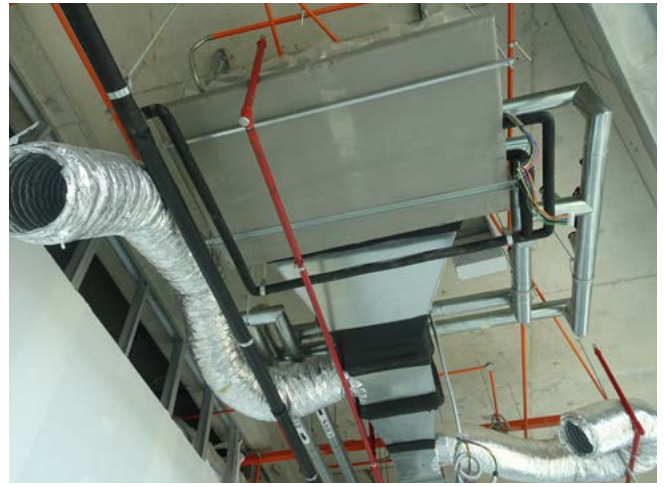
Indoor Advantage[™] Gold Certified for low chemical emissions

Verified Environmental Product Declarations (EPD's) and Health

Product Declarations (HPD's)

Naturally mold-resistant; no added biocides required

Ultra-low PVC content – less than 1%

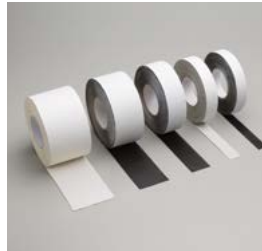


AEROFLEX EPDM[™] insulation system solutions



AEROFLEX[®] Adhesives

Specially formulated adhesives for bonding and vapor-sealing AEROFLEX EPDM[™] insulation. Fast tack and LVOC formulations available.



Protape[®]

Zero-perm EPDM-based, self-adhering rubber tape for sealing glued insulation seams and termination points.



AeroFit[™]

Pre-fabricated fitting covers made of AEROFLEX EPDM[™] rubber for high-quality installation on HVAC and plumbing piping.



Aerocoat[®]

Premium insulation coating specially formulated for AEROFLEX EPDM[™] insulation to provide UV protection for exterior applications and as a decorative finish.

Fast, simple to install

Ready to install with common pipe hanger types such as trapeze (strut), split-ring, clevis, roller, clamp and strap hangers

Saves labor versus field-applied support methods

Self-sealing and ready for bonding to AEROFLEX EPDM[™] closed-cell elastomeric insulation tubes using AEROFLEX[®] adhesives and Protape[®]

Product: Insulated pipe supports for HVAC, refrigeration, VRF, chilled water and hot/cold water piping systems.

Installation Instructions:



Physical and Operational Properties

Physical and Operational Properties	Diameter			Test Method
	Up to 3"	4" to 9"	10" and up	
Density (Lbs./ft3)	10-14	14-17	17-19	
Thermal conductivity @75°F mean temp, Max (BTU.in/hr.Ft2.°F)	0.277	0.312	0.347	ASTM C518
Water Absorption (% by weight), Max	7%	5%	3%	ASTM D1056
Compressive Strength at yield (PSI), Min	227	341	512	ASTM D1621
Surface Burning/Flammability (through 2" thick)	Self-Extinguishing			ASTM D635
Service temperature, CONTINUOUS	-328°F to 257°F -200°C to 125°C			ASTM C411 ¹
Water vapor permeability (Perm-inch) (EPDM polymer membrane)	0.00			ASTM E96
VOC Emissions	< 0.5 mg/m3			CDPH Standard Method v1.2

¹ AEROFLEX EPDM™ flexibility begins to decrease at -70°F and below. This does not impact the insulating properties of the material.

Additional Approvals, Certifications & Compliance

ANSI/ASHRAE/ICC/USGBC/IES Standard 189.1	International Green Construction Code® (igCC®)
ANSI/ASHRAE/IES Standard 90.1	Energy Standard for Buildings Except Low-Rise Residential Buildings
CA Title 24	International Energy Conservation Code®
California Specification 01350	VOC Emissions, Standard Method v1.2
EPA TSCA Section 6(h)	Toxic Substances Control Act Persistent, Bioaccumulative, and Toxic (PBT) Chemicals
IECC®	International Energy Conservation Code®
LEED®	U.S. Green Building Council - Leadership in Energy and Environmental Design
MEA #171-04-M	City of New York Material and Acceptance Pipe Insulation
REACH	European Chemicals Agency (ECHA) - Registration, Evaluation, Authorization and Restriction of Chemicals
RoHS	European Union - Restriction of Hazardous Substances

Potential LEED® Credit Contributions

Energy & Atmosphere (EA)	Prerequisite: Minimum Energy Performance Credit: Optimize Energy Performance
Materials & Resources (MR)	Credit: Building Product Disclosure and Optimization - Environmental Product Declarations (EPD), Product Specific Type III Credit: Building Product Disclosure and Optimization - Material Ingredients, verified HPD
Indoor Environmental Quality (EQ)	Credit: Low-Emitting Materials Credit: Indoor Air Quality Assessment Credit: Thermal Comfort Credit: Acoustic Performance
Innovation (IN)	Credit: Occupant Comfort Survey





Nominal 1/2" Wall			
Aerofix ID (inches)	IPS (inches)	Length (inches)	Aerofix OD (inches)
1/4	-	3	1.250
3/8	-	3	1.441
1/2	1/8	3	1.498
5/8	1/4	3	1.629
3/4	3/8	3	1.757
7/8	1/2	3	1.860
1-1/8	3/4	3	2.297
1-3/8	1	3	2.487
1-5/8	1-1/4	3	2.818
1-7/8	1-1/2	3	2.980
2-1/8	-	3	3.252
2-3/8	2	3	3.682
2-5/8	-	4	3.862
2-7/8	2-1/2	4	4.134
3-1/8	-	4	4.414
3-1/2	3	4	4.780
3-5/8	-	4	4.746
4-1/8	3-1/2	4	5.214
4-1/2	4	4	5.682
5-1/2	5	4	6.821
6-5/8	6	4	7.654
8-5/8	8	4	9.784
10-3/4	10	4	11.825

Nominal 3/4" Wall			
Aerofix ID (inches)	IPS (inches)	Length (inches)	Aerofix OD (inches)
1/4	-	3	1.770
3/8	-	3	1.870
1/2	1/8	3	2.009
5/8	1/4	3	2.116
3/4	3/8	3	2.311
7/8	1/2	3	2.406
1-1/8	3/4	3	2.627
1-3/8	1	3	3.012
1-5/8	1-1/4	3	3.393
1-7/8	1-1/2	3	3.648
2-1/8	-	3	3.824
2-3/8	2	3	3.990
2-5/8	-	4	4.355
2-7/8	2-1/2	4	4.525
3-1/8	-	4	4.817
3-1/2	3	4	5.266
3-5/8	-	4	5.236
4-1/8	3-1/2	4	5.936
4-1/2	4	4	6.152
5-1/2	5	4	7.302
6-5/8	6	4	8.357
8-5/8	8	4	10.326
10-3/4	10	4	12.412

Nominal 1" Wall			
Aerofix ID (inches)	IPS (inches)	Length (inches)	Aerofix OD (inches)
1/4	-	3	2.322
3/8	-	3	2.462
1/2	1/8	3	2.608
5/8	1/4	3	2.764
3/4	3/8	3	2.908
7/8	1/2	3	2.930
1-1/8	3/4	3	3.252
1-3/8	1	3	3.473
1-5/8	1-1/4	3	3.740
1-7/8	1-1/2	3	4.080
2-1/8	-	3	4.168
2-3/8	2	3	4.628
2-5/8	-	4	4.792
2-7/8	2-1/2	4	5.106
3-1/8	-	4	5.264
3-1/2	3	4	5.714
3-5/8	-	4	5.856
4-1/8	3-1/2	4	6.184
4-1/2	4	4	6.566
5-1/2	5	4	7.778
6-5/8	6	4	8.822
8-5/8	8	4	10.710
10-3/4	10	4	12.750
12-3/4	12	4	15.035

Nominal 1-1/2" Wall			
Aerofix ID (inches)	IPS (inches)	Length (inches)	Aerofix OD (inches)
1/4	-	3	3.470
3/8	-	3	3.648
1/2	1/8	3	3.652
5/8	1/4	3	3.856
3/4	3/8	3	4.048
7/8	3/8	3	4.050
1-1/8	3/4	3	4.395
1-3/8	1	3	4.592
1-5/8	1-1/4	3	4.834
1-7/8	1-1/2	3	5.102
2-1/8	-	3	5.468
2-3/8	2	3	5.504
2-5/8	-	4	5.885
2-7/8	2-1/2	4	6.080
3-1/8	-	4	6.372
3-1/2	3	4	6.795
3-5/8	-	4	6.760
4-1/8	3-1/2	4	7.204
4-1/2	4	4	7.738
5-1/2	5	4	8.686
6-5/8	6	4	9.872
8-5/8	8	4	11.976
10-3/4	10	4	14.000
12-3/4	12	4	16.000

Nominal 2" Wall			
Aerofix ID (inches)	IPS (inches)	Length (inches)	Aerofix OD (inches)
5/8	1/4	3	4.826
3/4	3/8	3	4.844
7/8	1/2	3	4.994
1-1/8	3/4	3	5.258
1-3/8	1	3	5.518
1-5/8	1-1/4	3	5.726
1-7/8	1-1/2	3	5.958
2-1/8	-	3	6.176
2-3/8	2	3	6.556
2-5/8	-	4	6.762
2-7/8	2-1/2	4	7.026
3-1/8	-	4	7.332
3-1/2	3	4	7.727
3-5/8	-	4	7.756
4-1/8	3-1/2	4	8.292
4-1/2	4	4	8.682
5-1/2	5	4	9.710
6-5/8	6	4	10.755
8-5/8	8	4	12.750
10-3/4	10	4	14.970
12-3/4	12	4	17.000

232 Industrial Park Road Sweetwater, TN 37874
 866.237.6235
 www.aeroflexusa.com

011924