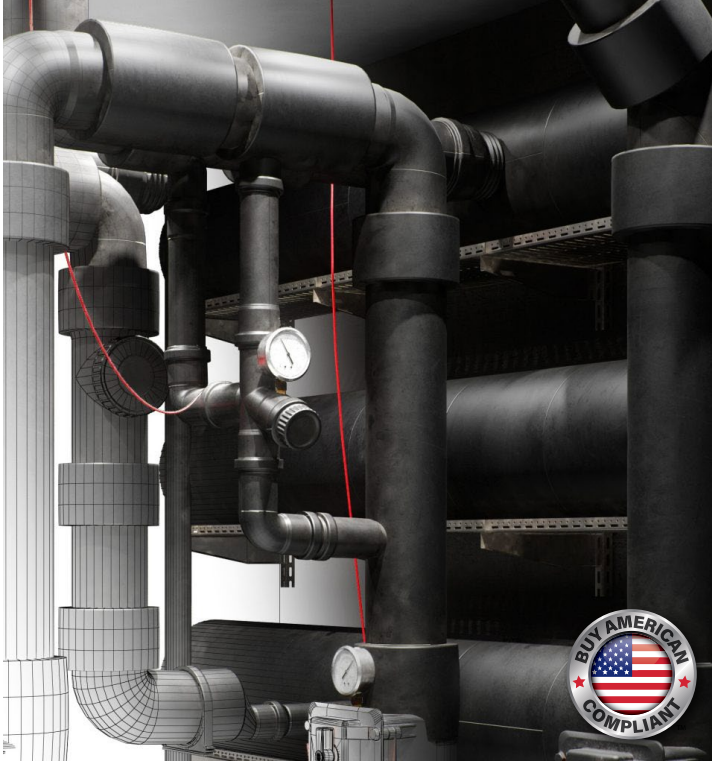




# AEROFLEX®

Low-VOC Special Purpose Contact Adhesive



## Aeroseal LVOC™ Black

Professional Grade Low-VOC Contact Adhesive





# Aeroseal LVOC™ Black

Low-VOC Contact Adhesive  
Best choice for LEED® and Living Building Challenge (LBC) projects

HVAC | Refrigeration | VRF | Chilled Water Duct Liner | Ductwrap | Hot & Cold-Water Piping

Aeroseal LVOC Black is a low-VOC special purpose contact adhesive specially formulated for bonding adjoining seams of Aerocel® insulation to suitable substrates.

Colors: Black

Sizes: 1 gallon, 1 pint w/ brush-top

## Fast, simple to install

Tack times of 3-5 minutes (depending on ambient conditions)

Instantly bonds once dry to the touch

Tapes and coatings can be applied immediately after installation

## Superior performance

Strong tenacious bonds

High water vapor resistance

Properly sealed seams minimize likelihood of corrosion under insulation (CUI)

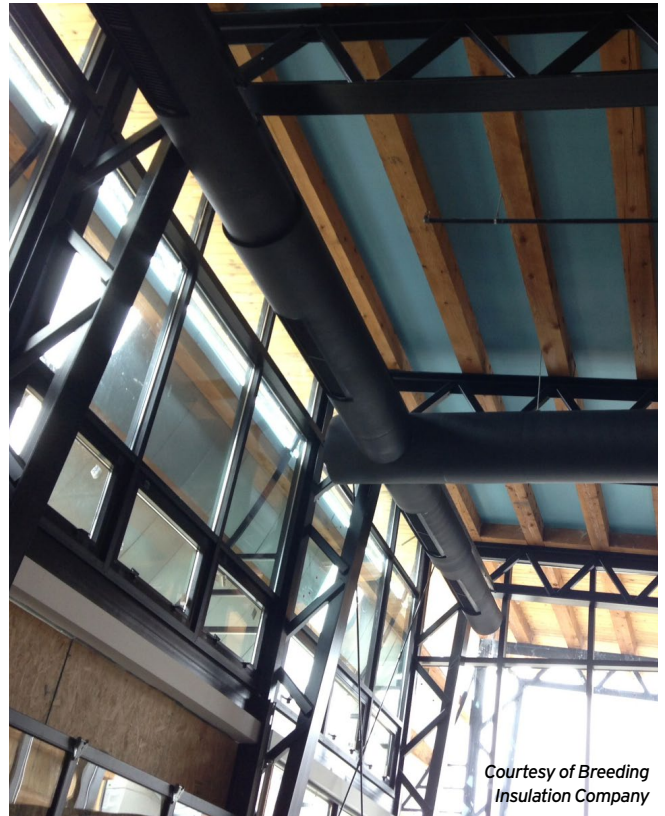
## Safe for indoor environments

Low-VOC content and emissions

Complies with LEED® VOC requirements for interior-applied and exterior-applied adhesives

Does not contain LBC Red List chemicals

Verified Environmental Product Declarations (EPD)



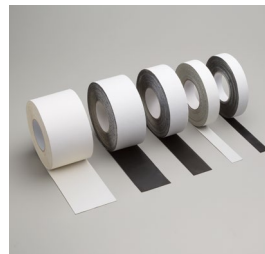
Courtesy of Breeding Insulation Company

## Aeroflex insulation system solutions



### Aerofix®

Light-weight, rigid pipe supports, pre-insulated with closed-cell EPDM foam rubber and encased with zero-perm EPDM polymer membrane. Includes built-in pressure sensitive Protape® closure system.



### Protape®

Zero-perm, EPDM-based, self-adhering rubber tape for sealing adjoining seams and termination points.



### Aerocoat™

A premium specialty coating for exterior weather protection and as a decorative finish.



### Aerocoat LVOC™

A low-VOC UV protective coating, best choice for LEED® and LBC projects.

**Product:** Synthetic rubber-based contact adhesive for bonding Aerocel insulation to itself and to clean suitable substrates such as metal.

**Application:** Stir contents thoroughly before use. Do not thin. Apply thin even coat to both clean and dry surfaces with short-bristle brush or adhesive roller. Allow short tack time (3-5 minutes or more depending on ambient conditions) until dry to the touch (no transfer) before applying both glued surfaces together. The bond is immediate with no adjustability. Moderate pressure should be applied over the entire area to ensure complete contact and a vapor seal.

Aeroseal LVOC should be applied when ambient and surface temperatures are above 40°F (4°C) and below 100° F (38°C). Do not allow to freeze.

If adhesive was dry to the touch prior to contact, glued seams may be covered with Protape® and full-coverage applications may be coated with Aerocoat™ or Aerocoat LVOC™ immediately after installation.

**Clean Up:** Use acetone to clean adhesive residue from tools.

**Physical Properties**

Composition (Black)	Synthetic rubber base with added resins and fillers
Solids Content	Approximately 26% by weight
Net Weight	7.0 lbs/gal
VOC Content	167 g/L (less water) SCAQMD Rule 1168
VOC Emissions	0.5 mg/m3 or less, CDPH Specification 01350
Red List Chemicals	Zero
Service Temperature Range	-20°F to 257°F (piping), 200°F (sheets & rolls) -28°C to 125°C (piping), 93°C (sheets & rolls)
Tack Time	3-5 minutes (dry to touch, no transfer)
Dry Time	Immediate (upon contact)
Coverage	Up to 200 ft2/gal
Shelf Life	1 year (store at 60°F (16°C) - 80°F (27°C))

**Additional Approvals, Compliances, Etc.**

CDPH Standard Method v1.2	Low-Emitting Materials, VOC Emissions, Adhesives and Sealants
SCAQMD Rule 1113	Low-Emitting Materials, VOC Content, Adhesives and Sealants
Materials & Resources (MR)	Credit: Building Product Disclosure and Optimization - Environmental Product Declarations (EPD), Product Specific Type III
Materials Red List	International Living Future Institute (ILFI) Living Building Challenge (LBC) standard

**Potential LEED® Credit Contributions**

Indoor Environmental Quality (EQ)	Credit: Low-Emitting Materials, Interior and Exterior-Applied Adhesives
-----------------------------------	---

**Read all warnings on product label before use.**





282 Industrial Park Road Sweetwater, TN 37874  
423.337.2493 Fax: 423.337.7675 Toll Free: 866.AEROCEL  
[www.aeroflexusa.com](http://www.aeroflexusa.com)

111521