



**AEROFLEX®**

Protective/Decorative Coating for EPDM Insulation

# Aerocoat LVOC®

Low-VOC Coating for  
AEROFLEX® EPDM Insulation





# Aerocoat LVOC®

Low-VOC content and emissions  
Best choice for LEED® and Living Building Challenge (LBC) projects

HVAC | Refrigeration | VRF | Chilled Water Ductwrap | Hot & Cold-Water Piping

Low-VOC, water-based coating for AEROFLEX® EPDM insulation. Provides a decorative finish on interior installations, adds UV protection and code compliance for exterior applications.

U.S. energy codes require mandatory shielding of pipe insulation in exterior environments. Coatings such as Aerocoat LVOC are compliant; adhesive tapes alone are not.

Sizes: 1-gallon containers (White)

## Fast, simple to install

Ready to apply right out of the container (no diluting or tinting recommended)

Two coats required to achieve 100% coverage

## Superior performance

Protects AEROFLEX® EPDM insulation from environmental factors such as solar radiation, moisture, wind, equipment maintenance

UV and water-retardant

Designed to expand and contract with insulation

Blends with white roofs

Prolongs life expectancy of AEROFLEX® EPDM insulation

## Safe for indoor & outdoor environments

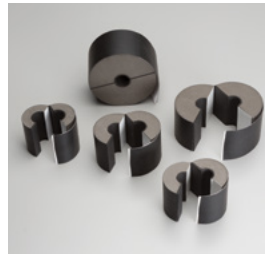
Low-VOC content and emissions

Indoor Advantage™ Gold Certified for low chemical emissions

Complies with LEED® VOC requirements for interior-applied and exterior-applied coatings

Does not contain LBC Red List chemicals

## AEROFLEX® EPDM insulation system solutions



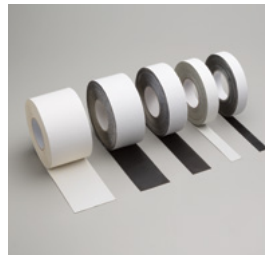
### Aerofix®

Light-weight, rigid pipe supports, pre-insulated with high-density, load-bearing foam and encased with zero-perm EPDM polymer membrane. Includes built-in pressure sensitive Protape® closure system.



### AeroFit™

Pre-fabricated fitting covers made of AEROFLEX® EPDM rubber for high-quality installation on HVAC and plumbing piping.



### Protape®

Zero-perm EPDM-based, self-adhering rubber tape for sealing glued insulation seams and termination points.



### AEROFLEX® Adhesives

Specially formulated adhesives for bonding and vapor-sealing AEROFLEX® EPDM insulation. Fast tack and LVOC formulations available.

**Product:** White, low-VOC, water-based coating specially formulated to protect AEROFLEX® EPDM insulation for interior and exterior applications.

**Installation Instructions:**



**Application:** If AEROFLEX® Aero seal or Aero seal LVOC™ Black adhesive was dry to the touch prior to contact, Aero coat LVOC may be applied immediately after installation. For AEROFLEX® REF 1520™ adhesive, refer to data sheet for required dry times. Before applying make sure insulation surfaces are clean and free from oil, grease, dust or loose portions of any previous coating. Stir Aero coat LVOC thoroughly and apply with brush or roller to the clean surface. No primer is required. Apply 2 coats allowing a minimum of 4 hours drying time (75°F, 70% RH) before applying second coat. Dilution or tinting of coating is not recommended due to negative impact on product performance. Recommended application ambient temperature is 50°F (10°C) to 100°F (38°C). Full cure time is 24 hours.

**Read all warnings on product label before use.**

**Clean Up:** Clean Water

**Physical Properties**

|                    |  |
|--------------------|--|
| Composition        | Water-based  |
| Solids Content     | Approximately 55% by weight                        |
| Net Weight         | 11 lbs/gal   |
| Appearance         | Low-Gloss  |
| VOC                | Content < 0.1 g/L, Emissions < 0.5 mg/m3           |
| Red List Chemicals | Zero   |
| Fungi Resistance   | Excellent  |
| Flammability       | Nonflammable                                       |
| Coverage           | Up to 300 ft2/gal                                  |
| Application        | Brush or roller                                    |
| Dry Time           | Minimum of 4 hours between coats (75°F, 70% RH)    |
| Reapply            | 3-5 years  |
| Storage            | 60°F to 80°F (16°C to 27°C), protect from freezing |
| Shelf Life         | 1 year (date of purchase)                          |

**Additional Approvals, Compliances, Etc.**

|  |   |
|--|---|
| ANSI/ASHRAE/IES Standard 90.1            | Energy Standard for Buildings Except Low-Rise Residential Buildings                   |
| IECC®                                    | International Energy Conservation Code®   |
| ANSI/ASHRAE/ICC/USGBC/IES Standard 189.1 | International Green Construction Code® (igCC®)  |
| CA Title 24                              | California Building Energy Efficiency Standards                                       |
| MEA #171-04-M                            | City of New York Material and Acceptance Pipe Insulation                              |
| California Specification 01350           | VOC Emissions, Standard Method v1.2   |
| SCAQMD Rule 1113                         | Architectural Coatings, LEED® for Healthcare and Schools                              |
| Materials Red List                       | International Living Future Institute (ILFI) Living Building Challenge (LBC) standard |

**Potential LEED® Credit Contributions**

|                                   |  |
|-----------------------------------|--|
| Indoor Environmental Quality (EQ) | Credit: Low-Emitting Materials, Interior and Exterior-Applied Coatings |
|-----------------------------------|--|





232 Industrial Park Road Sweetwater, TN 37874

866.237.6235

[www.aeroflexusa.com](http://www.aeroflexusa.com)

011723