



# AEROFLEX®

Special Purpose Contact Adhesive



# Aeroseal

Professional / Industrial Grade  
Contact Adhesive





# Aeroseal

Professional / Industrial Grade  
Contact Adhesive

HVAC | Refrigeration | VRF | Chilled Water  
Duct Liner | Ductwrap | Hot & Cold-Water Piping

Fast tack, solvent-based, special-purpose contact  
adhesive specially formulated for bonding adjoining  
seams of AEROFLEX® EPDM insulation and suitable  
substrates.

Colors: Amber and Black

Sizes: Gallon, quart, pint (flat-top), pint (brush-top),  
1/2 pint (brush-top).

## Fast, simple to install

Fast tack times of 1-3 minutes (depending on ambient conditions)

Instantly bonds once dry to the touch

Tapes and coatings can be applied immediately after installation

## Superior performance

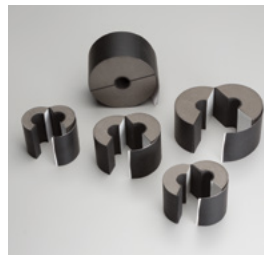
Strong permanent bonds

High water vapor resistance

Properly sealed seams minimize likelihood of corrosion under  
insulation (CUI)

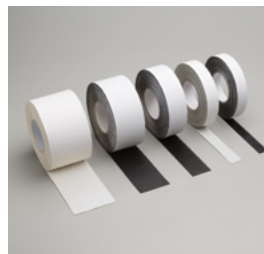


## AEROFLEX® EPDM insulation system solutions



### Aerofix®

Light-weight, rigid pipe supports,  
pre-insulated with high-density,  
load-bearing closed-cell foam and  
encased with zero-perm EPDM  
polymer membrane. Includes  
built-in pressure sensitive  
Protape® closure system.



### Protape®

Zero-perm, EPDM-based, self-  
adhering rubber tape for sealing  
adjoining seams and termination  
points.



### Aerocoat™

A premium specialty coating for  
exterior weather protection and  
as a decorative finish.



### Aerocoat LVOC™

A low-VOC UV protective  
coating, best choice for LEED®  
projects.

**Product:** Modified neoprene solvent-based contact adhesive for bonding AEROFLEX® insulation to itself and to suitable substrates such as clean metal.

**Installation  
Instructions:**



**Application:** Stir contents thoroughly before use. Do not thin. Apply thin even coat to both clean and dry surfaces with short-bristle brush or adhesive roller. Allow short tack time (1-3 minutes or more depending on ambient conditions) until dry to the touch (no transfer) before applying both glued surfaces together. The bond is immediate with no adjustability. Moderate pressure should be applied over the entire area to ensure complete contact and a vapor seal. AeroSeal should be applied when ambient and surface temperatures are above 40°F (4°C) and below 100°F (38°C). Do not allow to freeze.

If adhesive was dry to the touch prior to contact, glued seams may be covered with Protape® and full-coverage applications may be coated with Aerocoat® or Aerocoat LVOC® insulation coatings immediately after installation.

**Read all warnings on product label before use.**

**Clean Up:** Use acetone to clean adhesive residue from tools.

### Physical Properties

Composition (Amber or Black)	Synthetic rubber base with added resins and fillers
Solids Content	Approximately 25% by weight
Net Weight	6.9 lbs/gal
VOC Content	417 g/L
Service Temperature Range	-20°F to 257°F (piping), 200°F (sheets & rolls) -28°C to 125°C (piping), 93°C (sheets & rolls)
Surface Buring/Flammability	< 25/50 (ASTM E84)
Tack Time	1-3 minutes (dry to touch, no transfer)
Dry Time	Immediate (upon contact)
Coverage	Up to 200 ft <sup>2</sup> /gal
Storage	60°F to 80°F (16°C to 27°C), protect from freezing
Shelf Life	1 year (date of purchase)



232 Industrial Park Road Sweetwater, TN 37874

866.237.6235

[www.aeroflexusa.com](http://www.aeroflexusa.com)

011723