



AEROFLEX®

Protective/Decorative Coating for EPDM Insulation



Aerocoat LVOC®

Low-VOC Coating for
AEROFLEX EPDM™ Insulation





Aerocoat LVOC®

Low-VOC content and emissions
Best choice for LEED® and Living Building Challenge (LBC) projects

HVAC | Refrigeration | VRF | Chilled Water
Ductwrap | Hot & Cold-Water Piping

Low-VOC, water-based coating for AEROFLEX EPDM™ insulation. Provides a decorative finish on interior installations, adds UV protection and code compliance for exterior applications.

U.S. energy codes require mandatory shielding of pipe insulation in exterior environments. Coatings such as Aerocoat LVOC are compliant; adhesive tapes alone are not.

Sizes: 1-gallon containers (White)

Fast, simple to install

Ready to apply right out of the container (no diluting or tinting recommended)

Two coats required to achieve 100% coverage

Superior performance

Protects AEROFLEX EPDM™ insulation from environmental factors such as solar radiation, moisture, wind, equipment maintenance

UV and water-retardant

Designed to expand and contract with insulation

Blends with white roofs

Prolongs life expectancy of AEROFLEX EPDM™ insulation

Safe for indoor & outdoor environments

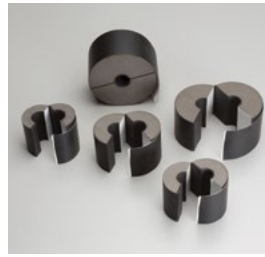
Low-VOC content and emissions

Indoor Advantage™ Gold Certified for low chemical emissions

Complies with LEED® VOC requirements for interior-applied and exterior-applied coatings

Does not contain LBC Red List chemicals

AEROFLEX EPDM™ insulation system solutions



Aerofix®

Light-weight, rigid pipe supports, pre-insulated with high-density, load-bearing foam and encased with zero-perm EPDM polymer membrane. Includes built-in pressure sensitive Protape® closure system.



AeroFit™

Pre-fabricated fitting covers made of AEROFLEX EPDM™ rubber for high-quality installation on HVAC and plumbing piping.



Protape®

Zero-perm EPDM-based, self-adhering rubber tape for sealing glued insulation seams and termination points.



AEROFLEX® Adhesives

Specially formulated adhesives for bonding and vapor-sealing AEROFLEX® EPDM insulation. Fast tack and LVOC formulations available.

Product: White, low-VOC, water-based coating specially formulated to protect AEROFLEX EPDM™ insulation for interior and exterior applications.

Installation Instructions:



Application: If AEROFLEX® Aeroseal or Aeroseal LVOC™ Black adhesive was dry to the touch prior to contact, Aerocoat LVOC may be applied immediately after installation. For AEROFLEX® REF 1520™ adhesive, refer to data sheet for required dry times. Before applying make sure insulation surfaces are clean and free from oil, grease, dust or loose portions of any previous coating. Stir Aerocoat LVOC thoroughly and apply with brush or roller to the clean surface. No primer is required. Apply 2 coats allowing a minimum of 4 hours drying time (75°F, 70% RH) before applying second coat. Dilution or tinting of coating is not recommended due to negative impact on product performance. Recommended application ambient temperature is 50°F to 100°F (10°C to 38°C). Full cure time is 24 hours.

Read all warnings on product label before use.

Clean Up: Clean Water

Physical Properties

Composition	Water-based
Solids Content	Approximately 55% by weight
Net Weight	11 lbs/gal
Appearance	Low-Gloss
VOC	Content < 0.1 g/L, Emissions < 0.5 mg/m3
Red List Chemicals	Zero
Fungi Resistance	Excellent
Flammability	Nonflammable
Coverage	Up to 300 ft2/gal
Application	Brush or roller
Dry Time	Minimum of 4 hours between coats (75°F, 70% RH)
Reapply	3-5 years
Storage	60°F to 80°F (16°C to 27°C), protect from freezing
Shelf Life	1 year (date of purchase)

Additional Approvals, Compliances, Etc.

ANSI/ASHRAE/IES Standard 90.1	Energy Standard for Buildings Except Low-Rise Residential Buildings
IECC®	International Energy Conservation Code®
ANSI/ASHRAE/ICC/USGBC/IES Standard 189.1	International Green Construction Code® (igCC®)
CA Title 24	California Building Energy Efficiency Standards
MEA #171-04-M	City of New York Material and Acceptance Pipe Insulation
California Specification 01350	VOC Emissions, Standard Method v1.2
SCAQMD Rule 1113	Architectural Coatings, LEED® for Healthcare and Schools
Materials Red List	International Living Future Institute (ILFI) Living Building Challenge (LBC) standard

Potential LEED® Credit Contributions

Indoor Environmental Quality (EQ)	Credit: Low-Emitting Materials, Interior and Exterior-Applied Coatings
-----------------------------------	--



232 Industrial Park Road Sweetwater, TN 37874

866.237.6235

www.aeroflexusa.com

060123