



AEROFLEX®

Special Purpose Contact Adhesive



Aeroseal

Professional / Industrial Grade
Contact Adhesive





Aeroseal

**Professional / Industrial Grade
Contact Adhesive**

HVAC | Refrigeration | VRF | Chilled Water
Duct Liner | Ductwrap | Hot & Cold-Water Piping

Fast tack, solvent-based, special-purpose contact adhesive specially formulated for bonding adjoining seams of AEROFLEX EPDM™ insulation and suitable substrates.

Colors: Amber and Black

Sizes: Gallon, quart, pint (flat-top), pint (brush-top),
1/2 pint (brush-top).

Fast, simple to install

Fast tack times of 1-3 minutes (depending on ambient conditions)

Instantly bonds once dry to the touch

Tapes and coatings can be applied immediately after installation

Superior performance

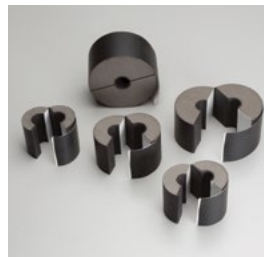
Strong permanent bonds

High water vapor resistance

Properly sealed seams minimize likelihood of corrosion under insulation (CUI)

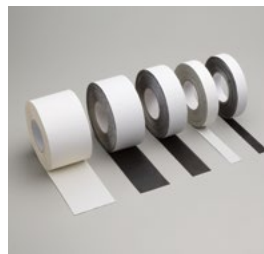


AEROFLEX EPDM™ insulation system solutions



Aerofix®

Light-weight, rigid pipe supports, pre-insulated with high-density, load-bearing closed-cell foam and encased with zero-perm EPDM polymer membrane. Includes built-in pressure sensitive Protape® closure system.



Protape®

Zero-perm, EPDM-based, self-adhering rubber tape for sealing adjoining seams and termination points.



Aerocoat™

A premium specialty coating for exterior weather protection and as a decorative finish.



Aerocoat LVOC®

A low-VOC UV protective coating, best choice for LEED® projects.

Product: Modified neoprene solvent-based contact adhesive for bonding AEROFLEX® insulation to itself and to suitable substrates such as clean metal.

**Installation
Instructions:**



Application: Stir contents thoroughly before use. Do not thin. Apply thin even coat to both clean and dry surfaces with short-bristle brush or adhesive roller. Allow short tack time (1-3 minutes or more depending on ambient conditions) until dry to the touch (no transfer) before applying both glued surfaces together. The bond is immediate with no adjustability. Moderate pressure should be applied over the entire area to ensure complete contact and a vapor seal. AeroSeal should be applied when ambient and surface temperatures are above 40°F (4°C) and below 100°F (38°C). Do not allow to freeze.

If adhesive was dry to the touch prior to contact, glued seams may be covered with Protape® and full-coverage applications may be coated with AeroCoat® or AeroCoat LVOC® insulation coatings immediately after installation.

Read all warnings on product label before use.

Clean Up: Use acetone to clean adhesive residue from tools.

Physical Properties

Composition (Amber or Black)	Synthetic rubber base with added resins and fillers
Solids Content	Approximately 25% by weight
Net Weight	6.9 lbs/gal
VOC Content	417 g/L
Service Temperature Range	-20°F to 257°F (piping), 200°F (sheets & rolls) -28°C to 125°C (piping), 93°C (sheets & rolls)
Surface Buring/Flammability	< 25/50 (ASTM E84)
Tack Time	1-3 minutes (dry to touch, no transfer)
Dry Time	Immediate (upon contact)
Coverage	Up to 200 ft2/gal
Storage	60°F to 80°F (16°C to 27°C), protect from freezing
Shelf Life	1 year (date of purchase)



232 Industrial Park Road Sweetwater, TN 37874
866.237.6235
www.aeroflexusa.com

060123