



AEROFLEX®

EPDM Foam Tape



Aerotape™

EPDM Foam Tape for AEROFLEX EPDM™
Closed-Cell Elastomeric Insulation

HVAC | Refrigeration | Hot & Cold-Water Piping

Flexible, self-adhering foam tape for applying directly over metallic piping and glued insulation seams of AEROFLEX EPDM™ tube, sheet & roll insulation.

Available in 1/8" thick x 2" wide x 30' long rolls (black).

Reliable performance

Adheres firmly to metal substrates and AEROFLEX EPDM™ insulation

Flexible

Controls condensation over glued insulation seams

Saves energy: minimizes heat gain/loss

Wide service temperature range: -70°F to 200°F (-57°C to 93°C)

Naturally UV-resistant*

Safe for indoor environments

Fire Safety: self-extinguishing

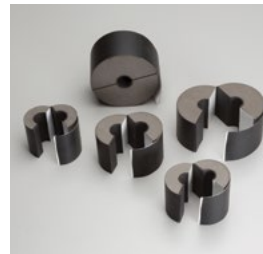
No CFC's, HFC's, HCFC's, PBDE's, nitrosamine or fibers

Non-corrosive on stainless steel and copper piping

Naturally mold-resistant; no added biocides required

Ultra-low PVC content – less than 1%

AEROFLEX EPDM™ insulation system solutions



Aerofix®

Light-weight, rigid pipe supports, pre-insulated with high-density, load-bearing closed-cell foam and encased with zero-perm EPDM polymer membrane. Includes built-in pressure sensitive Protape® closure system.



AeroFit™

Pre-fabricated fitting covers made of AEROFLEX EPDM™ rubber for high-quality installation on HVAC and plumbing piping.



AEROFLEX® Adhesives

Specially formulated adhesives for bonding and vapor-sealing AEROFLEX EPDM™ insulation. Fast tack and LVOC formulations available.

*For exterior applications, Protape® zero-perm EPDM rubber tape is required.



Product: EPDM-based (Ethylene Propylene Diene Monomer) self-adhering foam tape for insulating HVAC, refrigeration and hot/cold water piping systems.

Installation Instructions:



Physical and Operational Properties

Property	Test Value/Rating	Test Method
Thermal Conductivity @ 75°F mean temperature	.26 Btu.in/hr.ft ² .°F	ASTM C177/C518
Service Temperature, CONTINUOUS	-70°F to 200°F -57°C to 93°C	ASTM C411 ¹
UV Resistance	Pass	ASTM G7
Ozone Resistance	Pass	ASTM D1171
Water Absorption (% by weight), Max	5%	ASTM D1056
Water Vapor Permeability, Max	0.10 perm-inch	ASTM E96
Density (lbs/ft ³)	4-6	ASTM D1667
Surface Burning/Flammability	Self-extinguishing	ASTM D635
Adhesion peel strength, Min (at 180° angle)	1.15 lbs/in	ASTM D3330-04
Tensile Strength, Min	29 psi	ASTM D412-15a
Elongation, Min	136%	ASTM D412-15a

¹ AEROFLEX EPDM™ flexibility begins to decrease at -70°F and below. This does not impact the insulating properties of the material.

Additional Approvals, Compliances, Etc.

ANSI/ASHRAE/IES Standard 90.1	Energy Standard for Buildings Except Low-Rise Residential Buildings
ANSI/ASHRAE/ICC/USGBC/IES Standard 189.1	International Green Construction Code® (igCC®)
CA Title 24	California Building Energy Efficiency Standards
IECC®	International Energy Conservation Code®
MEA #171-04-M	City of New York Material and Acceptance Pipe Insulation

Potential LEED® Credit Contributions

Energy & Atmosphere (EA)	Prerequisite: Minimum Energy Performance Credit: Optimize Energy Performance
Indoor Environmental Quality (EQ)	Credit: Low-Emitting Materials Credit: Indoor Air Quality Assessment Credit: Thermal Comfort Credit: Acoustic Performance
Innovation (IN)	Credit: Occupant Comfort Survey



232 Industrial Park Road Sweetwater, TN 37874
866.237.6235
www.aeroflexusa.com

060123