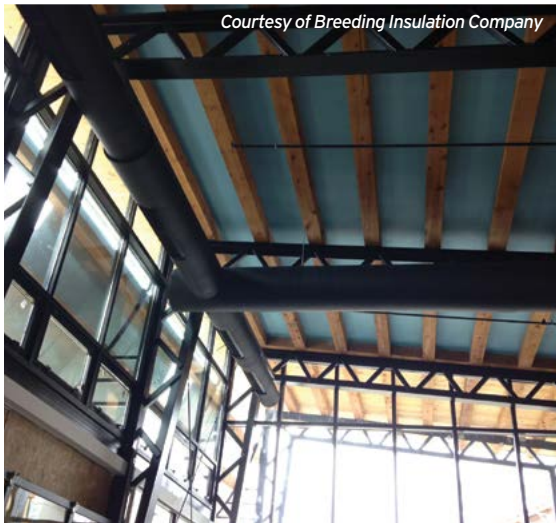




AEROFLEX®

EPDM Duct Insulation

**Listed & Labeled*



Courtesy of Breeding Insulation Company

AEROFLEX Breathe-EZ™ EPDM Duct Insulation

Fiber-free acoustic duct liner and wrap | Plenum-rated

Available with standard and PSA back





AEROFLEX Breathe-EZ™

Fiber-Free EPDM Duct Insulation

Duct Liner | Duct Wrap | Listed & Labeled*

Fiber-free, microbial-resistant, acoustic, closed-cell elastomeric duct insulation for safely lining and wrapping HVAC ductwork for thermal efficiency and condensation control. Attenuates lower-frequency airborne and structure-borne sound.

Proprietary blend of nonpolar EPDM rubber is key to consistent, long-lasting thermal performance and protection against moisture and environmental stresses.

Available in rolls: 1/2" [13 mm], 1" [25 mm], 1-1/2" [38 mm], and 2" [50 mm] thicknesses to meet energy code and condensation control requirements.

See back cover for R-Values and acoustic performance.

*Complies with International Mechanical Code's "Listed & Labeled" requirement for duct insulation contained within plenums.

Fast, simple to install

Available with pressure sensitive adhesive (PSA) back

Low thermal conductivity – reduced insulation thicknesses

Easy to install as a wrap over rectangular, round and oval ducts

Built-in vapor retarder – No supplemental vapor barrier required for most applications**

Superior environmental stability

Non-particulating

Nonpolar (hydrophobic) – does not induce or react with water

Smooth skin facing airstream easy to maintain

Suitable for interior and exterior applications***

Safe and quiet

Fiber-free

Naturally microbial-resistant with a smooth, cleanable surface

Indoor Advantage™ Gold Certified for low chemical emissions

Attenuates lower frequency mechanical noise

Superior fire safety – 25/50 rated (ASTM E84, UL723, CAN/ULC-S102), NFPA 90A/90B and self-extinguishing (ASTM D635) thru 2-inch [50 mm] thick

Verified Environmental Product Declarations (EPD's) and Health Product Declarations (HPD's)

Ultra-low PVC content – less than 1%



AEROFLEX EPDM™ insulation system solutions



AEROFLEX® Adhesives

Specially formulated adhesives for bonding and vapor-sealing AEROFLEX EPDM™ insulation. Fast tack and LVOC formulations available.



Protape®

Zero-perm EPDM-based, self-adhering rubber tape for sealing glued insulation seams and termination points.



Aerocoat™

Premium insulation coating specially formulated for AEROFLEX EPDM™ insulation to provide UV protection for exterior applications and as a decorative finish.



Aerocoat LVOC®

A low-VOC UV protective coating, best choice for LEED® projects.

**Supplemental vapor barrier may be required in extreme low-temperature or high-humidity applications. Protective jacket required for applications when insulation may be subjected to mechanical damage.

***Note: National, state & local energy codes require protection of cellular foam pipe insulation from solar radiation for exterior applications. Jackets and insulation coatings are acceptable. Adhesive tapes are not permitted.

Product: Closed-cell EPDM (Ethylene Propylene Diene Monomer)-based rubber elastomeric foam insulation for safely lining and wrapping HVAC ductwork. Skin 2 sides: 1" [25 mm], 1-1/2" [38 mm], 2" [50 mm], 1/2" [13 mm]. Roll widths 48" [122 cm], 56-1/4" [143 cm], 59" [150 cm], and 60" [152 cm]. See size range on back cover.

Installation Instructions:



Standard Specification: ASTM C534 Type II Grade 1, C1534 Type I

Apparent Thermal Conductivity (K) Btu-in/hr-Ft² -°F (W/m.K)

| Mean Temperature | K Value | Test Method |
|------------------|----------------|----------------|
| 75°F (24°C) | 0.255 (0.0368) | ASTM C177/C518 |
| 100°F (38°C) | 0.260 (0.0375) | |

Physical and Operational Properties

| Property | Test Value/Rating | Test Method |
|------------------------------|---|-------------------------------|
| Flame Spread Index (FSI) | < 25 | ASTM E84, UL723, CAN/ULC-S102 |
| Smoke Developed Index (SDI) | < 50 | ASTM E84, UL723, CAN/ULC-S102 |
| Service Temperatures | -70°F to 257°F (-57°C to 125°C) -22°F to 250°F (-30°C to 121°C) with PSA | ASTM C411 ¹ |
| Water Vapor Sorption | 0.08 perm-inch (4.38 x 10 ⁻¹¹ g/Pa.s.m) | ASTM E96 |
| Water Absorption | 0.2% | ASTM C209/C1763 |
| Dimensional Stability | < 7.0% | ASTM C356 |
| VOC Emissions | < 0.5 mg/m3 | CDPH Standard Method v1.2 |
| Odor Emission | Pass | ASTM C1304 |
| Corrosiveness | Pass | ASTM C665 |
| Fungi Resistance | No Growth | ASTM C1338/G21 |
| Erosion Resistance | No evidence of erosion @ 10,000 fpm (2.5 x 4,000 fpm) | ASTM C1071/UL181 |
| Mold Resistance | No Growth | UL 181 |
| Sound Absorption Coefficient | See back cover | ASTM C423 |

¹ AEROFLEX EPDM™ flexibility begins to decrease at -70°F and below. This does not impact the insulating properties of the material.

Additional Approvals, Certifications & Compliance

| | |
|--|--|
| ASTM C1534, Type I | Standard Specification for Flexible Polymeric Foam Sheet Insulation Used as a Thermal and Sound Absorbing Liner for Duct Systems |
| ANSI/ASHRAE/ICC/USGBC/IES Standard 189.1 | International Green Construction Code® (igCC®) |
| ANSI/ASHRAE/IES Standard 90.1 | Energy Standard for Buildings Except Low-Rise Residential Buildings |
| Buy American | Buy American, Federal Acquisition Regulation, FAR 52.225 Buy American |
| CA Title 24 | California Building Energy Efficiency Standards |
| California Specification 01350 | VOC Emissions, Standard Method v1.2 |
| CAN/ULC-S102 | UL and Standard Council of Canada |
| EPA | Toxic Substances Control Act (TSCA) Persistent, Bioaccumulative, and Toxic (PBT) Chemicals, Per- and Polyfluoralkyl Substances (PFAS) |
| IECC® | International Energy Conservation Code® |
| IMC Listed & Labeled | International Mechanical Code, Duct Coverings and Linings within plenums |
| LEED® | U.S. Green Building Council - Leadership in Energy and Environmental Design |
| NFPA 90A/90B | National Fire Protection Association, Standard for the Installation of Air-Conditioning and Ventilating Systems/Standard for the Installation of Warm Air Heating and Air-Conditioning Systems |
| REACH | European Chemicals Agency (ECHA) - Registration, Evaluation, Authorization and Restriction of Chemicals |
| RoHS | European Union - Restriction of Hazardous Substances |

Potential LEED® Credit Contributions

| | |
|-----------------------------------|---|
| Energy & Atmosphere (EA) | Prerequisite: Minimum Energy Performance Credit: Optimize Energy Performance |
| Materials & Resources (MR) | Credit: Building Product Disclosure and Optimization - Environmental Product Declarations (EPD), Product Specific Type III Credit: Building Product Disclosure and Optimization - Material Ingredients, verified HPD |
| Indoor Environmental Quality (EQ) | Credit: Low-Emitting Materials Credit: Indoor Air Quality Assessment Credit: Thermal Comfort Credit: Acoustic Performance |
| Innovation (IN) | Credit: Occupant Comfort Survey |



AEROFLEX Breathe-EZ™ EPDM Duct Insulation R-Values

| Thickness (inches) | 1/2 | 1 | 1-1/2 | 2 |
|--------------------|-----|-----|-------|-----|
| R-value | 2.1 | 4.2 | 6.1 | 8.1 |

AEROFLEX Breathe-EZ™ EPDM Duct Insulation *with PSA* R-Values

| Thickness (inches) | 1/2 | 1 | 1-1/2 | 2 |
|--------------------|-----|-----|-------|-----|
| R-value | 2.1 | 4.2 | 6.1 | 8.1 |

ROLL SIZE

| Thickness (inches) | Skin | 48" | 56-1/4" | 59" | 60" |
|--------------------|---------|----------|--------------|----------|----------|
| 1/2" | 2 sides | 48"x100' | 56-1/4"x100' | 59"x100' | 60"x100' |
| 1" | 2 sides | 48"x50' | 56-1/4"x50' | 59"x50' | 60"x50' |
| 1-1/2" | 2 sides | 48"x40' | 56-1/4"x40' | 59"x40' | 60"x40' |
| 2" | 2 sides | 48"x20' | 56-1/4"x20' | 59"x20' | 60"x20' |

Sound Absorption Coefficients (min) Using Test Method ASTM C423 Type A Mounting Practice E795

| Frequency | 125 | 250 | 500 | 1000 | 2000 | 4000 | NRC | SAA |
|----------------|------|------|------|------|------|------|------|------|
| 1/2" (13 mm) | 0.03 | 0.04 | 0.11 | 0.37 | 0.60 | 0.29 | 0.30 | 0.30 |
| 1" (25 mm) | 0.08 | 0.13 | 0.69 | 0.44 | 0.47 | 0.46 | 0.45 | 0.46 |
| 1-1/2" (25 mm) | 0.10 | 0.27 | 0.82 | 0.36 | 0.49 | 0.53 | 0.50 | 0.54 |
| 2" (50 mm) | 0.09 | 0.43 | 0.63 | 0.55 | 0.49 | 0.55 | 0.56 | 0.56 |

