

UL/cUL SYSTEM NO. W-L-5387

## INSULATED METAL PIPE THROUGH GYPSUM WALL ASSEMBLY

F-RATING = 1-HR. OR 2-HR.

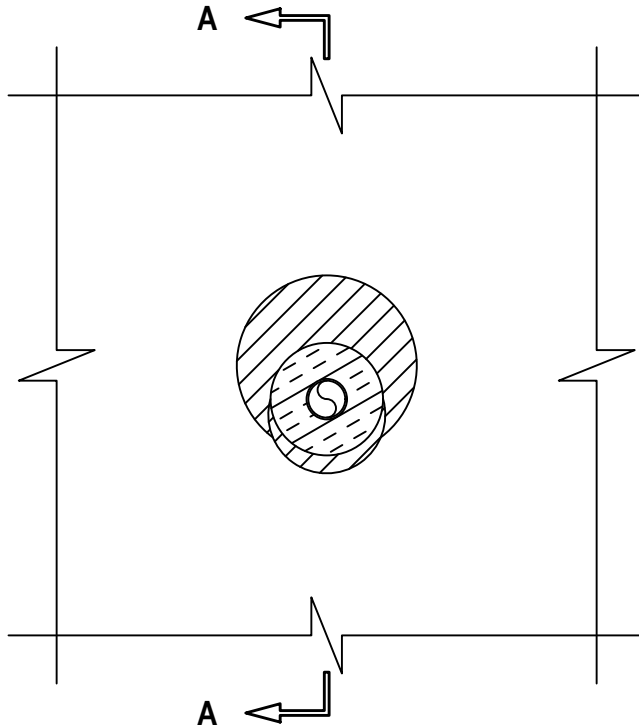
T-RATING = 0-HR., 3/4-HR., OR 1-HR.

L-RATING AT AMBIENT = LESS THAN 1 CFM / SQ FT OR 4 CFM / SQ FT (SEE TABLE BELOW)

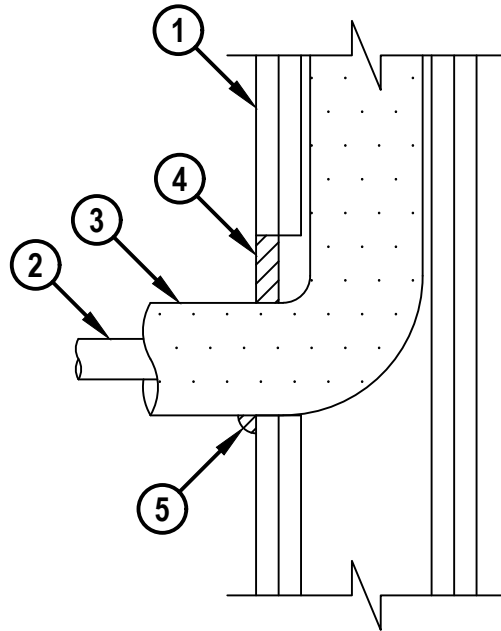
L-RATING AT 400°F = LESS THAN 1 CFM / SQ FT

WL5387b.022825

FRONT VIEW



SECTION A-A



**HILTI**  
Hilti Firestop Systems

HILTI, Inc.  
Plano, Texas USA (800) 879-8000

Sheet	1 of 2
Scale	3/16" = 1"
Date	Feb. 28, 2025

Drawing No.

**WL**  
**5387b**

*Saving Lives through Innovation and Education*

**INSULATED METAL PIPE THROUGH GYPSUM WALL ASSEMBLY**

F-RATING = 1-HR. OR 2-HR.

T-RATING = 0-HR., 3/4-HR., OR 1-HR.

L-RATING AT AMBIENT = LESS THAN 1 CFM / SQ FT OR 4 CFM / SQ FT (SEE TABLE BELOW)

L-RATING AT 400°F = LESS THAN 1 CFM / SQ FT

WL5387b.022825

1. GYPSUM WALL ASSEMBLY (UL/cUL CLASSIFIED U300, U400, V400, OR W400 SERIES) (1-HR. OR 2-HR. FIRE-RATING) (2-HR. SHOWN) TO INCLUDE THE FOLLOWING CONSTRUCTION FEATURES :
  - A. [NOT SHOWN] WOOD STUDS TO CONSIST OF NOMINAL 2" x 4" LUMBER (SPACED MAXIMUM 16" OC). STEEL STUDS TO BE MINIMUM 3-5/8" WIDE (SPACED MAXIMUM 24" OC).
  - B. NOMINAL 5/8" THICK GYPSUM WALLBOARD. TYPE, NUMBER OF LAYERS, AND SHEET ORIENTATION AS SPECIFIED IN THE INDIVIDUAL UL DESIGN.
2. PENETRATING ITEM TO BE ONE OF THE FOLLOWING:
  - A. NOMINAL 1" DIAMETER STEEL PIPE (SCHEDULE 5 OR HEAVIER).
  - B. NOMINAL 1" DIAMETER CAST OR DUCTILE IRON PIPE.
  - C. NOMINAL 1" DIAMETER COPPER PIPE OR TUBING.
3. PIPE INSULATION TO BE ONE OF THE FOLLOWING (SEE TABLE BELOW):
  - A. MINIMUM 1/2" TO MAXIMUM 1" THICK GLASS-FIBER PIPE INSULATION
  - B. MINIMUM 1/2" TO MAXIMUM 3/4" THICK NBR/PVC OR AB/PVC FLEXIBLE FOAM PIPE INSULATION
  - C. MINIMUM 1/2" TO MAXIMUM 3/4" THICK EPDM RUBBER PIPE INSULATION.
4. MINIMUM 5/8" DEPTH HILTI FS-ONE MAX INTUMESCENT FIRESTOP SEALANT.
5. MINIMUM 1/2" BEAD HILTI FS-ONE MAX INTUMESCENT FIRESTOP SEALANT APPLIED AT POINT OF CONTACT.

INSULATION TYPE	SIZE OF OPENING	MINIMUM ANNULAR SPACE	MAXIMUM ANNULAR SPACE	CONTINUOUS POC (POINT OF CONTACT)	L-RATING AT AMBIENT, CFM / SQ FT
NBR, AB/PVC, OR EPDM	4"	0", POINT CONTACT	1-1/2"	NO	LESS THAN 1
GLASS-FIBER	5"	0", POINT CONTACT	2-1/4"	YES	4

**Hilti Firestop Systems**

HILTI, Inc.  
Plano, Texas USA (800) 879-8000

Sheet 2 of 2

Scale -

Date Feb. 28, 2025

Drawing No.

**WL**  
**5387b**
***Saving Lives through Innovation and Education***