

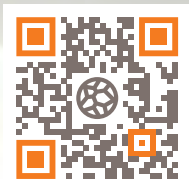


InnoFoam[™]

Self-Seal Polyethylene Pipe Insulation

PLUMBING

- 
- 
- 
- 





InnoFoam™

Self-Seal Polyethylene Pipe Insulation

Hot & Cold-Water Plumbing | Freeze Protection

InnoFoam is a flexible closed-cell polyethylene foam pipe insulation designed to retard heat gain or loss, control condensation and provide freeze protection. Available in pre-slit self-seal tubes, it is ideal for residential and light commercial applications. Made in the U.S.A.

Wide range of ID sizes and thicknesses available. See back cover.

Color: Black

Fast, simple to install

InnoFoam pre-slit tubes with high-performance factory-applied pressure-sensitive adhesive (PSA) along longitudinal seams with high-visibility release liners for time and labor-saving applications

Superior Performance

Compatible with common types of piping - steel, copper, PVC, CPVC, PEX and ABS

High tear resistance, elongation and tensile strength

Low water vapor permeability

Safe for Indoor and Outdoor Environments*

Low-VOC

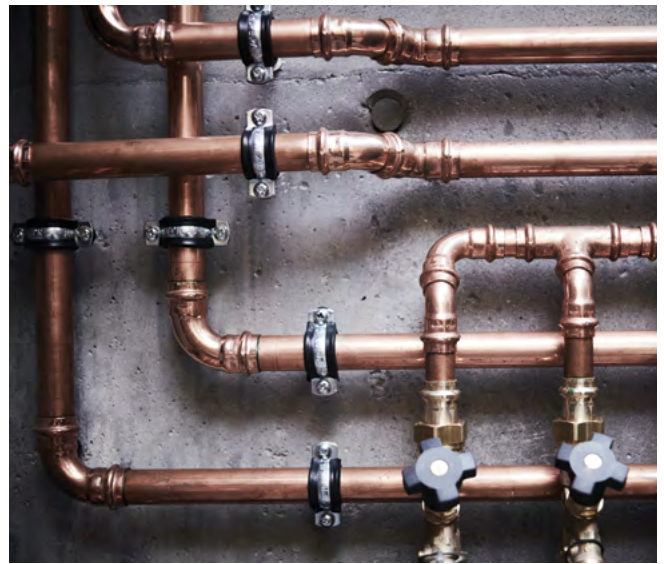
Manufactured without CFC's, HCFC's, HFC's, PBDE's and formaldehyde

Fiber-free, non-particulating

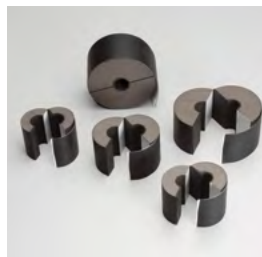
Mold-resistant

Passes ASTM E84 25/50 (to 1-1/2" thick)

*For exterior applications, Aerocoat®, Aerocoat LVOC®, or an insulation jacket are recommended for UV protection to maximize the insulation's life cycle.



AEROFLEX EPDM™ insulation system solutions



Aerofix®

Light-weight, rigid pipe supports, pre-insulated with high-density, load-bearing closed-cell foam and encased with zero-perm EPDM polymer membrane. Includes built-in pressure sensitive Protape® closure system



AEROFLEX® Adhesives

Specially formulated adhesives for bonding and vapor-sealing InnoFoam® insulation. Fast tack and LVOC formulations available.



Courtesy of Nelson Insulation Company

Protape®

Zero-perm EPDM-based, self-adhering rubber tape for sealing glued insulation seams and termination points.



Aerocoat®

Premium insulation coating specially formulated for InnoFoam® insulation to provide UV protection for exterior applications and as a decorative finish.

Product: Closed-cell flexible polyolefin foam insulation for hot/cold water plumbing and freeze protection.

**Installation
Instructions:**



Standard Specification: ASTM C1427, Type 1

Thermal Conductivity (K) Btu-in/hr-Ft² -°F (W/m.K)

Mean Temperature	K Value	Test Method
75°F (24°C)	0.25	ASTM C177/C518
90°F (32°C)	0.27	

Physical and Operational Properties

Property	Test Value/Rating	Test Method
Service Temperature, CONTINUOUS	-200°F to 200°F (-129°C to 93°C)	ASTM C411
UV Resistance	Good	ASTM G154
Ozone Resistance	Good	ASTM D1171
Water Vapor Permeability, Max	< 0.05 perm-inch	ASTM E96 (Procedure A)
Water Absorption (% by Volume), Max	< 0.2%	ASTM C1763
Surface Burning (through 1-1/2" thick)	< 25 FSI, < 50 SDI (25/50)	ASTM E84
Fungi Resistance	Passes	ASTM G21
Density, Lbs. per Cubic Foot (PCF)	1.0 to 1.5	ASTM D1667
Compressive Strength (25%)	2.0 to 5.0 PSI	ASTM C165/C1621
Tensile Strength	30 PSI	
Elongation	50%	
Thermal Stability, Liner Shrinkage	< 3.0%	ASTM C356
Odor Emission	No objectionable odor	
VOC emissions	Negligible	

Additional Approvals, Certifications & Compliance

ANSI/ASHRAE/IES Standard 189.1	International Green Construction Code® (igCC®)
ANSI/ASHRAE/IES Standard 90.1	Energy Standard for Buildings Except Low-Rise Residential Buildings
IECC®	International Energy Conservation Code®
CA Title 24	California Building Energy Efficiency Standards



InnoFoam™ Pipe Insulation R-Values

Pipe Size (inches)	Wall Thickness (inches)			
	3/8	1/2	3/4	1
1/4	NA	NA	NA	NA
3/8	2.7	NA	NA	NA
1/2	NA	3.7	NA	NA
5/8	2.6	3.5	5.7	8.1
3/4	NA	3.6	NA	NA
7/8	2.3	3.2	5.1	7.2
1-1/8	2.2	3.0	4.8	6.7
1-3/8	2.1	2.9	4.9	6.4
1-5/8	2.2	3.0	4.6	6.4
2-1/8	2.0	2.7	4.2	5.8
2-3/8	NA	2.7	4.1	5.7
2-5/8	2.1	2.7	4.1	5.7
3-1/8	NA	2.7	4.1	5.6
3-5/8	NA	2.7	4.1	5.5
4-1/8	NA	2.8	4.1	5.5
4-1/2	NA	2.8	4.1	5.5



Aeroflex USA

Sweetwater, TN
www.aeroflexusa.com

061926